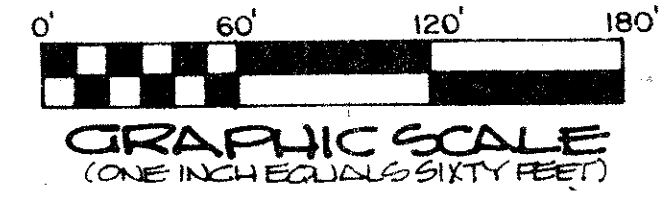


53/43

43



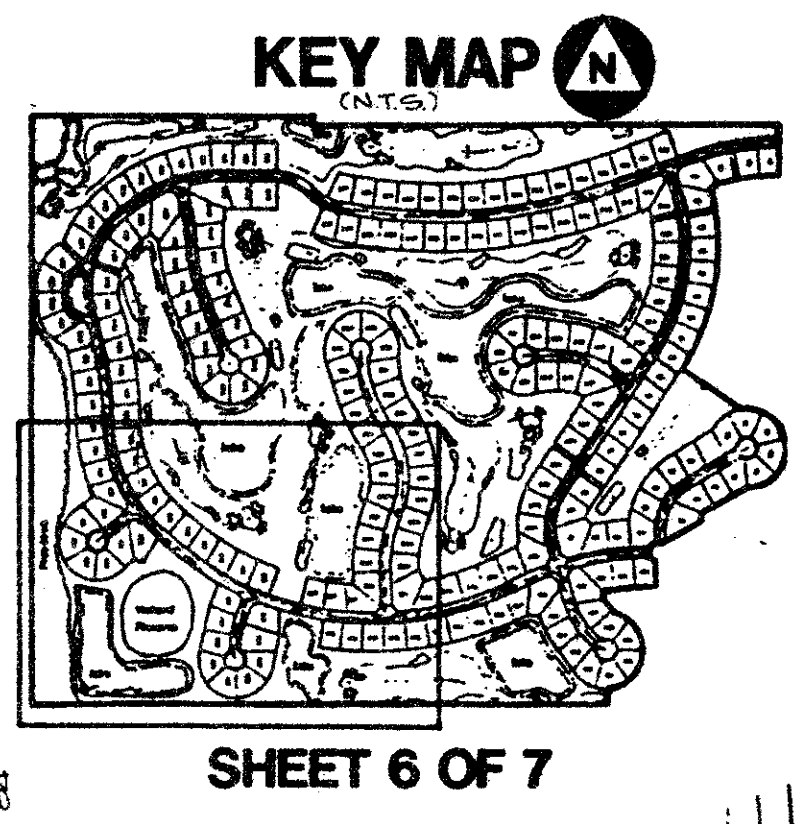
STONEBRIDGE PLAT NO. 2

A part of SOUTHERN MANOR P.U.D.

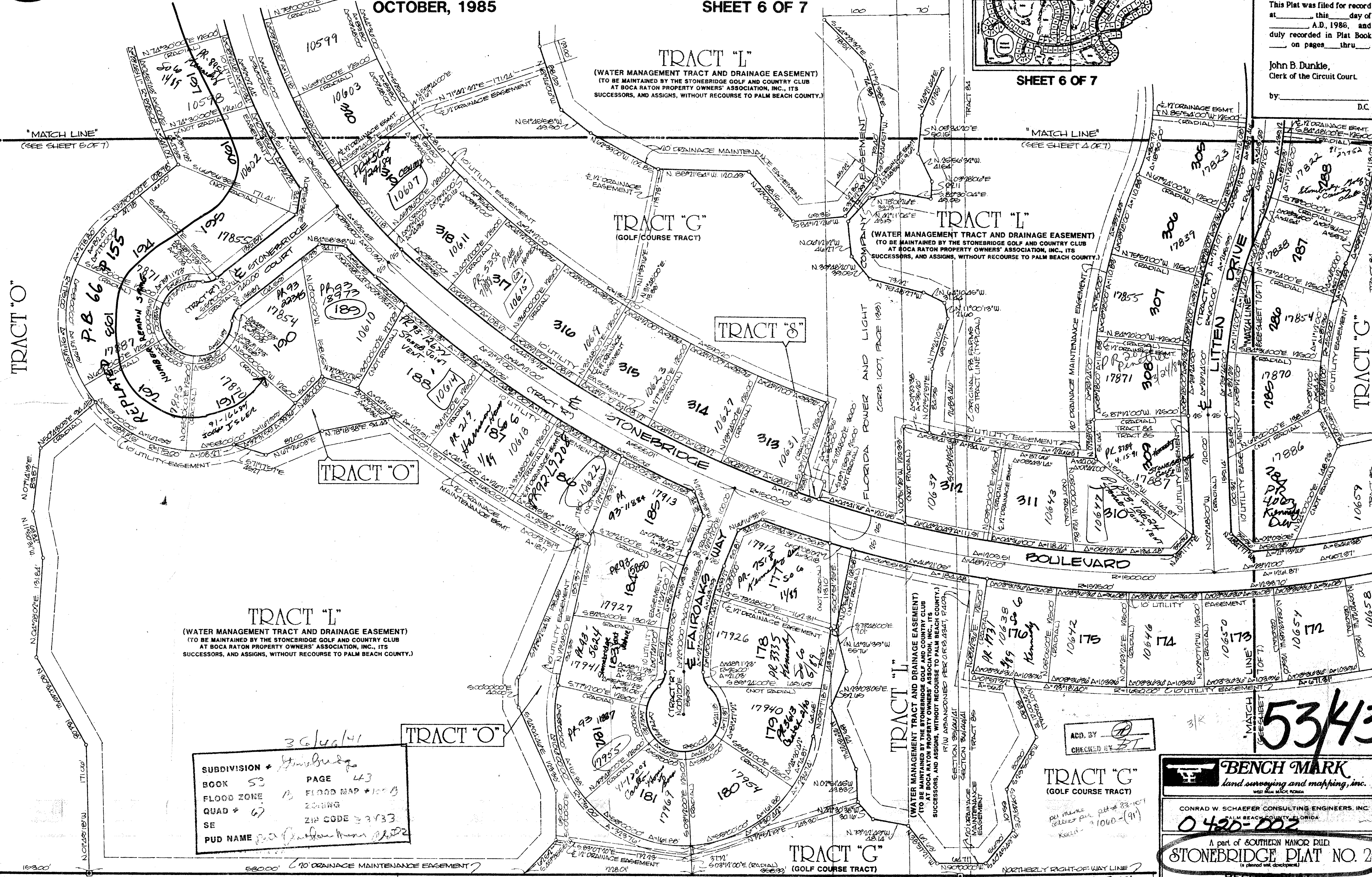
Lying in the east 1/2 of the southeast 1/4 of Section 35 and being a replat of a portion of the south 1/2 of Block 69, Palm Beach Farms Company, Plat No. 3, Plat Book 2, Pages 45-54 (inclusive,) Section 36, all in Township 46 South, Range 41 East, Palm Beach County, Florida.

OCTOBER, 1985

SHEET 6 OF 7



State of Florida)
County of Palm Beach)
This Plat was filed for record at _____ this _____ day of _____ A.D., 1985, and duly recorded in Plat Book _____ on pages _____ thru _____
John B. Dunkle,
Clerk of the Circuit Court.
by: _____ D.C.



TRACT "L"
(WATER MANAGEMENT TRACT AND DRAINAGE EASEMENT)
(TO BE MAINTAINED BY THE STONEBRIDGE GOLF AND COUNTRY CLUB AT BOCA RATON PROPERTY OWNERS' ASSOCIATION, INC., ITS SUCCESSORS, AND ASSIGNS, WITHOUT RECOURSE TO PALM BEACH COUNTY.)

TRACT "L"
(WATER MANAGEMENT TRACT AND DRAINAGE EASEMENT)
(TO BE MAINTAINED BY THE STONEBRIDGE GOLF AND COUNTRY CLUB AT BOCA RATON PROPERTY OWNERS' ASSOCIATION, INC., ITS SUCCESSORS, AND ASSIGNS, WITHOUT RECOURSE TO PALM BEACH COUNTY.)

TRACT "L"
(WATER MANAGEMENT TRACT AND DRAINAGE EASEMENT)
(TO BE MAINTAINED BY THE STONEBRIDGE GOLF AND COUNTRY CLUB AT BOCA RATON PROPERTY OWNERS' ASSOCIATION, INC., ITS SUCCESSORS, AND ASSIGNS, WITHOUT RECOURSE TO PALM BEACH COUNTY.)

SUBDIVISION	Stonebridge
BOOK	53
FLOOD ZONE	B FLOOD MAP #1003
QUAD #	67
SE	
PUD NAME	Southern Manor
PAGE	43
FLOOD MAP	#1003
ZONING	
ZIP CODE	33433

TRACT "G"
(GOLF COURSE TRACT)

BENCH MARK
land surveying and mapping, inc.
CONRAD W. SCHAEFER CONSULTING ENGINEERS, INC.
PALM BEACH COUNTY, FLORIDA
0420-202
A part of SOUTHERN MANOR P.U.D.
STONEBRIDGE PLAT NO. 2
(a replat and development)
RECORD PLAT

DESIGNED	BY	DATE	SCALE	APPROVED	FILE NO.	SHEET OF
	E. OGDARD		1"=60'			6 OF 7

DATE: OCT. 1985

This instrument was prepared by Wm. R. Van Campen, R.L.S., in and for the offices of Bench Mark Land Surveying and Mapping, Inc., Four Points Centre, 50 South Military Trail, Suite 200, West Palm Beach, Florida, 33415. Phone: (305) 689-2111

DRAWING NUMBER

DRAWING NUMBER

DRAWING NUMBER

104575

NOT PLATTED

N. 00°51'22"W

"MATCH LINE"
(SEE SHEET 5 OF 7)

"MATCH LINE"
(SEE SHEET 4 OF 7)

"MATCH LINE"
(SEE SHEET 7 OF 7)

53/43

N. 89°49'10"W

1312.00'

SOUTH WEST CORNER SECTION 36/24/14

S. 89°10'18"W 1353.48'
L.W.D.D. S-11 CANAL

ORIGINAL P.B. FARMING CO. TRACT LINE (TYPICAL)